

# PILOT PARKS

## April 2021 - March 2022



### Three Pilot Parks were chosen:

**Alexandra Park, Poole**  
**Watermans Park, Christchurch**  
**Winton Recreation Ground, Bournemouth**

### With the aim to:

- **Increase biodiversity**
- **Engage local communities** and increase the number of people in the parks as well as how long they spend there
- **Test** whether we could bring urban community parks to life.

## Surveys and masterplans

- **C.400 residents** completed surveys in summer 2020 on what they'd like to see change in the park
- **Three masterplans** were produced by BCP Council Landscape Designers



## Staff



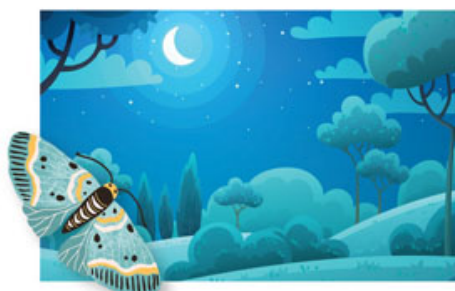
## 2 experienced Parks Activators

were employed in spring 2021 by The Parks Foundation to engage the local community by delivering fun and educational nature-based activities, volunteering opportunities, and making physical changes in the parks.

## Trading

Opened a community café at Winton which is now self-sustaining

Explored trading options at Alexandra Park and Waterman's Park with management options suggested



**1,679 attendees**

**249 activities**

**249 activities** were delivered including Nature Tots, volunteering sessions, family Park Life events, moth nights and astronomy evenings.

## Volunteering

**2 new GreenFingers volunteering groups** were established, providing regular volunteering opportunities.

**8 regular attendees**

**38 volunteering sessions** took place which included tending the new community gardens, planting trees and bulbs, and doing general park maintenance.



**The 2 new community gardens** yielded lots of vegetables that were donated to local people in need via other charities.





# Improvements for wildlife

These changes help provide vital food and habitat for local wildlife in the parks:



**510 trees**  
planted



**5,000 bulbs**  
planted



**130m of native hedgerow**  
planted



**25 bird and bat boxes**  
installed



**3,350m<sup>2</sup> of wildflower meadow**  
sown



**5,700m<sup>2</sup> of meadow**  
left as 'no mow' areas



**Rare Southern Damselfly**  
has been spotted at  
Watermans Park.

## Funding

In addition to the FPA funding:

**£6,000**

Donated to our wildflower campaign through **The Big Give's Green Match Fund**.

**£16,525**

Granted from **Trusts and Foundations** for improvements to the three parks

**415 trees**

Donated from **Woodland Trust and The Conservation Volunteers**

## Feedback

Consultation stalls were carried out in September 2021:

**c.100 people surveyed** in person in the parks over two days.

Changes to the parks had been noticed (**86%**) and liked (**78%**) by most people.

**96%** of people surveyed were keen on the further planned changes to the parks.

Noticed changes

Liked changes

Keen on changes

86%

78%

96%

## What next? £224,000 Grant

Our work in the **Pilot Parks** has led to a grant of £224,000 from the **Green Recovery Challenge Fund** to carry out similar work in **8 more local parks**

The Project meets all the strategic goals of BCP Council's Green Infrastructure strategy

### Goal 1:



Encourage healthy living and well-being

### Goal 2:



Strengthen resilience to climate change

### Goal 3:



Support nature recovery and biodiversity

### Goal 4:



Support economic recovery, prosperity and placemaking

As well as enabling the delivery principles:

### Rethinking the future of parks and green spaces -

increasing the functionality of spaces as natural health centres and green living rooms, rewilding urban greenspaces and promoting nature-based solutions to help adapt to a changing climate.



### Connecting the Green Net -

Strengthening nature recovery and green travel networks and creating two new landscape-scale countryside and coastal parks.



The project has guided one of **The Parks Foundation's** next strategic objectives to support community parks



Watch our video at [parksfoundation.org.uk/nature-recovery](https://parksfoundation.org.uk/nature-recovery)